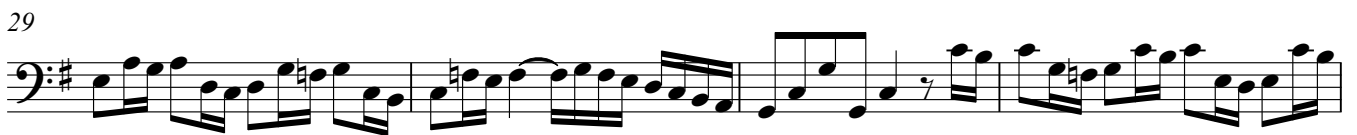
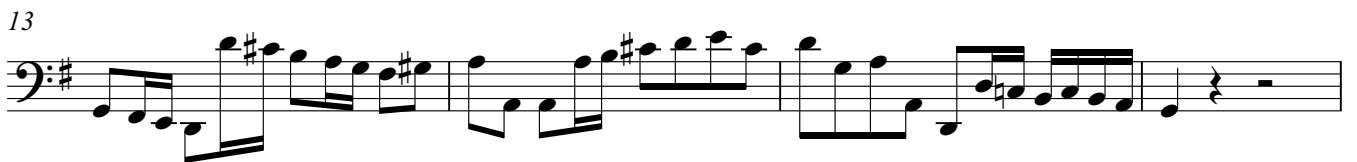


# Brandenburg Concerto No.3

BWV 1048

Johann Sebastian Bach

**[Allegro moderato]** ♩ = 100



41

45

50

55

59

63

67

72

76

81

86

90



96



101



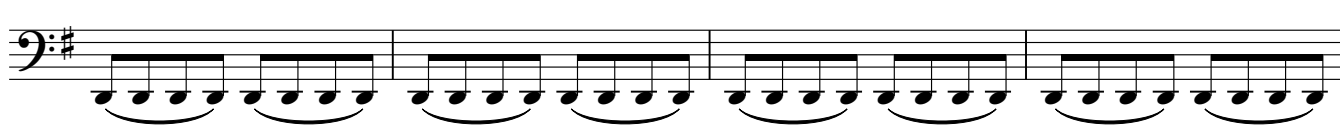
105



109



115



119



123



126



130



133



137 **Adagio** ♩ = 40 **Allegro** ♩ = 130

137-140: Bass clef, key signature of one sharp (F#), common time signature. A 12/8 time signature change occurs at measure 139. The music begins with a half note G2, followed by a whole note G2 with a fermata. Measure 139 contains a whole rest. Measure 140 begins with a sixteenth-note triplet starting on G2, moving up to B2.

140-142: Continuation of the sixteenth-note triplet from measure 140. The triplet continues through measure 141 and ends in measure 142 with a quarter note G2 and a quarter rest.

142-144: Continuation of the sixteenth-note triplet. Measure 142 starts with a quarter rest, followed by the triplet. Measure 143 continues the triplet. Measure 144 ends with a quarter note G2 and a quarter rest.

144-146: Continuation of the sixteenth-note triplet. Measure 144 starts with a quarter rest, followed by the triplet. Measure 145 continues the triplet. Measure 146 ends with a quarter note G2 and a quarter rest.

146-149: Continuation of the sixteenth-note triplet. Measure 146 starts with a quarter rest, followed by the triplet. Measure 147 continues the triplet. Measure 148 continues the triplet. Measure 149 ends with a quarter note G2 and a quarter rest.

149-151: Continuation of the sixteenth-note triplet. Measure 149 starts with a quarter rest, followed by the triplet. Measure 150 continues the triplet. Measure 151 ends with a quarter note G2 and a quarter rest.

151-155: Continuation of the sixteenth-note triplet. Measure 151 starts with a quarter rest, followed by the triplet. Measure 152 continues the triplet. Measure 153 continues the triplet. Measure 154 continues the triplet. Measure 155 ends with a quarter note G2 and a quarter rest.

155-157: Continuation of the sixteenth-note triplet. Measure 155 starts with a quarter rest, followed by the triplet. Measure 156 continues the triplet. Measure 157 ends with a quarter note G2 and a quarter rest.

157-159: Continuation of the sixteenth-note triplet. Measure 157 starts with a quarter rest, followed by the triplet. Measure 158 continues the triplet. Measure 159 ends with a quarter note G2 and a quarter rest.

159-161: Continuation of the sixteenth-note triplet. Measure 159 starts with a quarter rest, followed by the triplet. Measure 160 continues the triplet. Measure 161 ends with a quarter note G2 and a quarter rest.

161-163: Continuation of the sixteenth-note triplet. Measure 161 starts with a quarter rest, followed by the triplet. Measure 162 continues the triplet. Measure 163 ends with a quarter note G2 and a quarter rest.

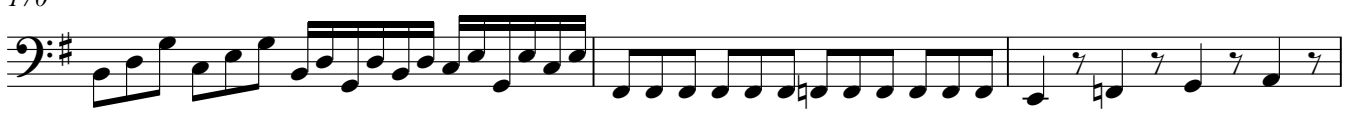
164



167



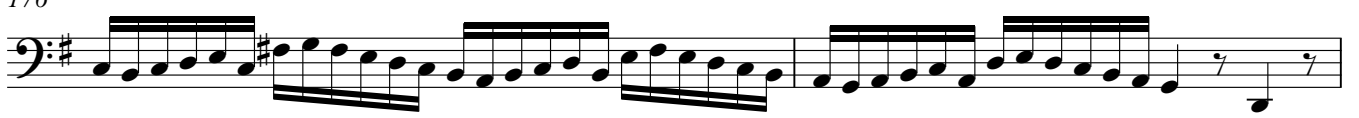
170



173



176



178



180



182



184

