

94



99



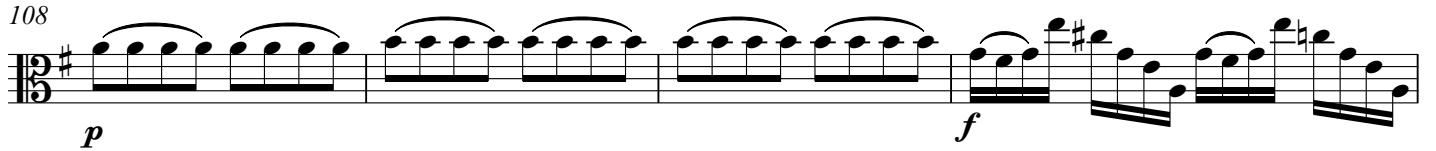
102



105



108



112



117



122



126



131



134



137 **Adagio** ♩ = 40 **Allegro** ♩ = 130

140

143

146

149

152

p *f*

155

157

159

161

163

166

p

168

f

This system contains measures 168 and 169. Measure 168 begins with a forte (*f*) dynamic marking. The music features a complex rhythmic pattern with eighth and sixteenth notes, including some beamed sixteenth-note runs.

170

This system contains measures 170 and 171. The music continues with similar rhythmic complexity, featuring eighth and sixteenth notes and some beamed sixteenth-note runs.

172

This system contains measures 172 and 173. The music features eighth and sixteenth notes with some beamed sixteenth-note runs.

173

This system contains measures 173 and 174. The music continues with eighth and sixteenth notes and some beamed sixteenth-note runs.

175

This system contains measures 175 and 176. The music features eighth and sixteenth notes with some beamed sixteenth-note runs.

178

This system contains measures 178 and 179. The music continues with eighth and sixteenth notes and some beamed sixteenth-note runs.

181

This system contains measures 181 and 182. The music features eighth and sixteenth notes with some beamed sixteenth-note runs.

183

This system contains measures 183 and 184. The music concludes with eighth and sixteenth notes and a final half note.