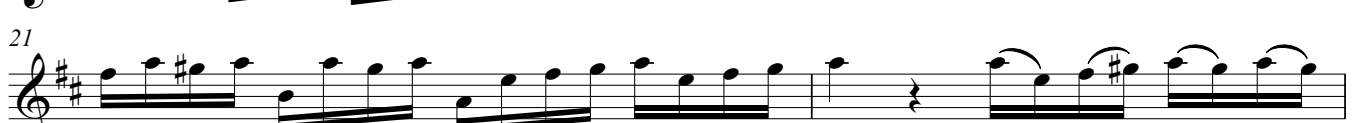


Concerto Grosso in D Major

Op. 6, No. 4

Arcangelo Corelli

Adagio $\text{♩} = 60$ *tr*

48 Musical staff 48-51: Treble clef, key signature of two sharps (F# and C#), common time signature. The music features a series of eighth-note patterns. A dynamic marking of *f* is present at the end of the staff.

52 *p* Adagio ♩ = 35 Musical staff 52-56: Treble clef, key signature of two sharps, common time signature. The music is marked *p* and Adagio with a tempo of ♩ = 35. It consists of a steady eighth-note accompaniment.

57 Musical staff 57-61: Treble clef, key signature of two sharps, common time signature. Continuation of the eighth-note accompaniment from the previous staff.

62 Musical staff 62-66: Treble clef, key signature of two sharps, common time signature. Continuation of the eighth-note accompaniment.

67 Vivace ♩ = 150 Musical staff 67-74: Treble clef, key signature of two sharps, 3/4 time signature. The music is marked *f* and Vivace with a tempo of ♩ = 150. It features a melody with dotted rhythms.

75 Musical staff 75-83: Treble clef, key signature of two sharps, 3/4 time signature. Continuation of the melody with trills (tr) and a dynamic marking of *f*.

84 Musical staff 84-88: Treble clef, key signature of two sharps, 3/4 time signature. Continuation of the melody with trills (tr) and dynamic markings of *p* and *f*.

89 Musical staff 89-93: Treble clef, key signature of two sharps, 3/4 time signature. Continuation of the melody with a dynamic marking of *p*.

94 Allegro ♩ = 150 Musical staff 94-103: Treble clef, key signature of two sharps, 2/4 time signature. The music is marked *f* and Allegro with a tempo of ♩ = 150. It features a melody with triplets (3) and a dynamic marking of *p*.

104 Musical staff 104-112: Treble clef, key signature of two sharps, 2/4 time signature. Continuation of the melody with triplets (3) and a dynamic marking of *f*.

113 Musical staff 113-121: Treble clef, key signature of two sharps, 2/4 time signature. Continuation of the melody with triplets (3) and a dynamic marking of *p*.

122 Musical staff 122-131: Treble clef, key signature of two sharps, 2/4 time signature. Continuation of the melody with triplets (3) and dynamic markings of *p* and *f*.

132 Musical staff 132-140: Treble clef, key signature of two sharps, 2/4 time signature. Continuation of the melody with triplets (3) and a dynamic marking of *f*.

141 Musical staff 141-144: Treble clef, key signature of two sharps, 2/4 time signature. Continuation of the melody with triplets (3) and a dynamic marking of *f*.

153 *tr*

165 *p*

174 *p*

183 1. 2. **Allegro** ♩ = 140 *f* *p*

188 *f*

191

194

196

199

Detailed description: This page of a musical score for 'S1 in C' contains measures 153 through 199. The music is written in treble clef with a key signature of one sharp (F#). Measures 153-164 feature melodic lines with trills and slurs. Measures 165-173 consist of a steady eighth-note accompaniment. Measure 174 continues this accompaniment with a piano (*p*) dynamic. Measure 183 marks the beginning of a first ending (1.) and a second ending (2.) which is marked 'Allegro' with a tempo of 140 beats per minute and a forte (*f*) dynamic. The second ending leads into a section of rapid sixteenth-note runs starting at measure 188, which are marked with a forte (*f*) dynamic. Measures 191-199 continue these runs, ending with a final cadence.